

Sec.: 11
 Twp.: 24 South
 Rng.: 36 East
 Dsn. by : N/A
 Drn. by : LB
 Chk. by : JWM

LOCATION MAP PREPARED FOR:
SAVANNAH LANDING
 BREVARD COUNTY FLORIDA

Date : 12/28/16
 Scale : 1"=2000'
 P.N. : 393303
 Sheet No.

Bussen-Mayer Engineering Group
 100 PARNELL STREET • MERRITT ISLAND, FLORIDA 32953
 PH. NO.: (321) 453-0010 FAX NO.: (321) 454-6885

Fig. 1



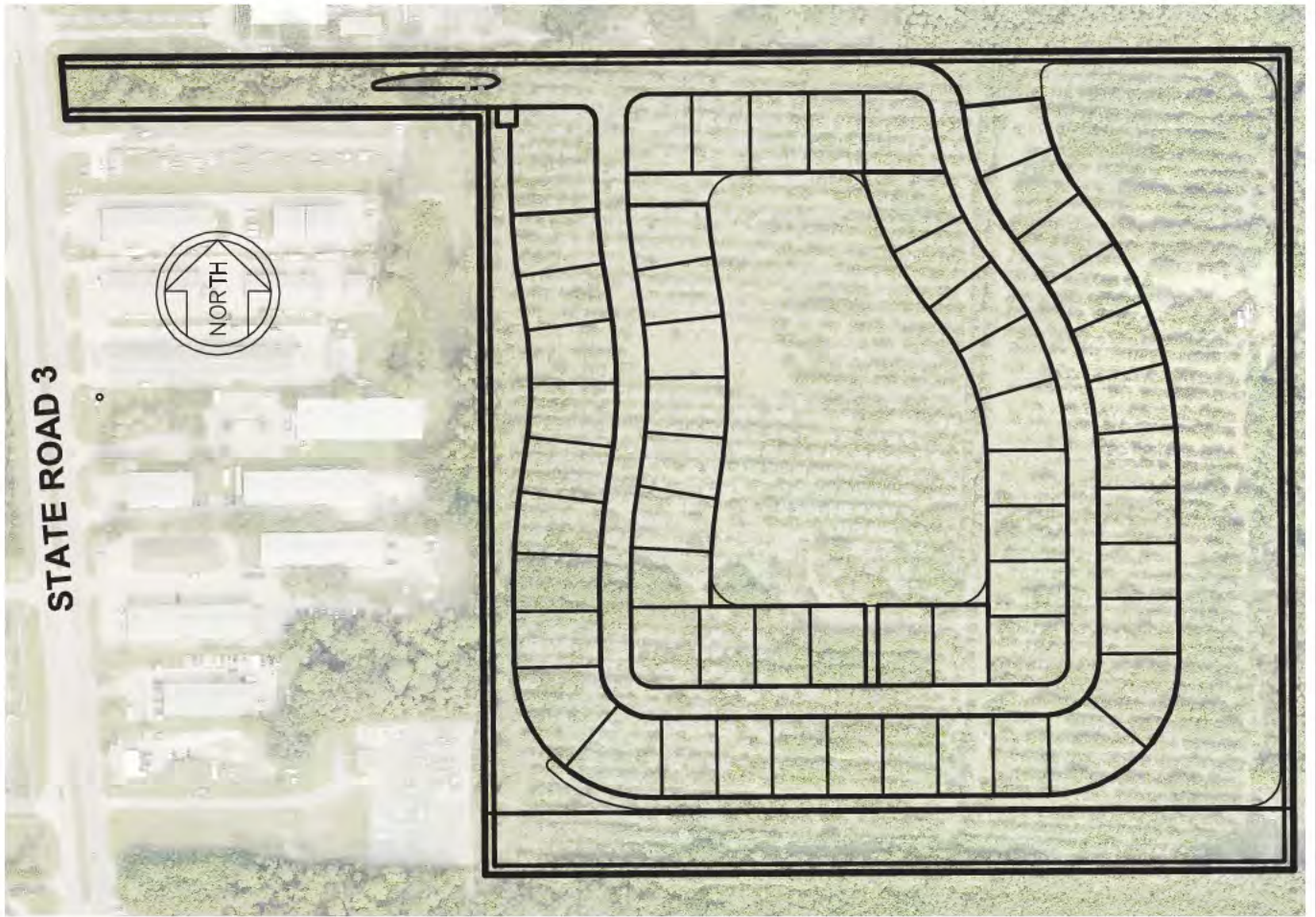
Courtenay Quadrangle Map
(1976)

Latitude: 28°25'06"
Longitude: 80°42'31"



Sec.: 11	QUADRANGLE MAP PREPARED FOR: SAVANNAH LANDING	Date : 12/28/16
Twp.: 24 South		Scale : 1"=1000'
Rng.: 36 East		P.N. : 393303
Dsn. by : N/A	BREVARD COUNTY	FLORIDA
Drn. by : LB	Bussen-Mayer Engineering Group	
Chk. by : JWM	100 PARNELL STREET • MERRITT ISLAND, FLORIDA 32953 PH. NO.: (321) 453-0010 FAX NO.: (321) 454-6885	
		Sheet No. Fig. 2

SAVANNAH LANDING SUBDIVISION



MASTER PLAN
1"=300'



Digitally signed
by Joseph W.
Mayer, P.E.
Date:
2017.01.12
12:34:50 -05'00'

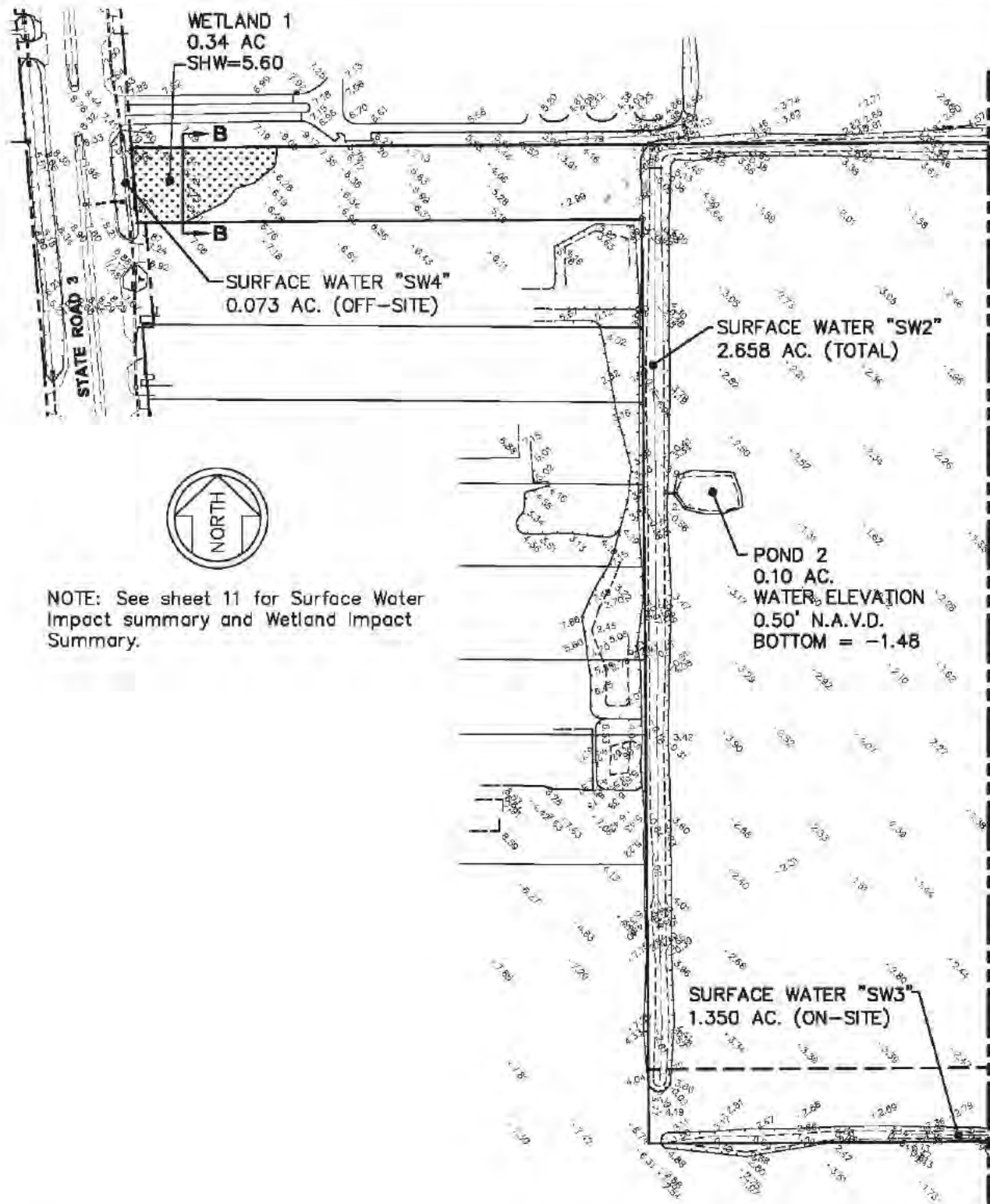
SHEET INDEX

Sheet	Description
1	Cover Sheet / Master Plan
2-3	Existing Conditions Plan
4-5	Existing Conditions Cross Sections
6-8	Proposed Improvements Plan
9-10	Proposed Cross Sections
11	Summary Tables
12	Littoral Shelf Details

Joseph W. Mayer P.E.
FLORIDA PROFESSIONAL
ENGINEER LICENSE NUMBER: 36836
BUSSEN-MAYER ENGINEERING CERT. NO.: 3535

SHEETS 1-12 INCLUSIVE

Sec.: 11	COVER SHEET / MASTER PLAN SAVANNAH LANDING	Date : 12/20/16
Twp.: 24 South		Scale : 1"=300'
Rng.: 36 East	BREVARD COUNTY	FLORIDA
Dsn. by : NA	Bussen-Mayer Engineering Group 100 PARNELL STREET • MERRITT ISLAND, FLORIDA 32953 PH. NO.: (321) 453-0010 FAX NO.: (321) 454-6885	P.N. : 393303
Drn. by : GM		Sheet No.
Chk. by : JWM		1



NOTE: See sheet 11 for Surface Water Impact summary and Wetland Impact Summary.

MATCH LINE - SEE SHEET 3

Sec.: 11
 Twp.: 24 South
 Rng.: 36 East
 Dsn. by : NA
 Drn. by : GM
 Chk. by : JWM

EXISTING CONDITIONS
SAVANNAH LANDING

BREVARD COUNTY

FLORIDA



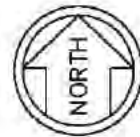
Bussen-Mayer Engineering Group

100 PARNELL STREET • MERRITT ISLAND, FLORIDA 32953
 PH. NO.: (321) 453-0010 FAX NO.: (321) 454-6885



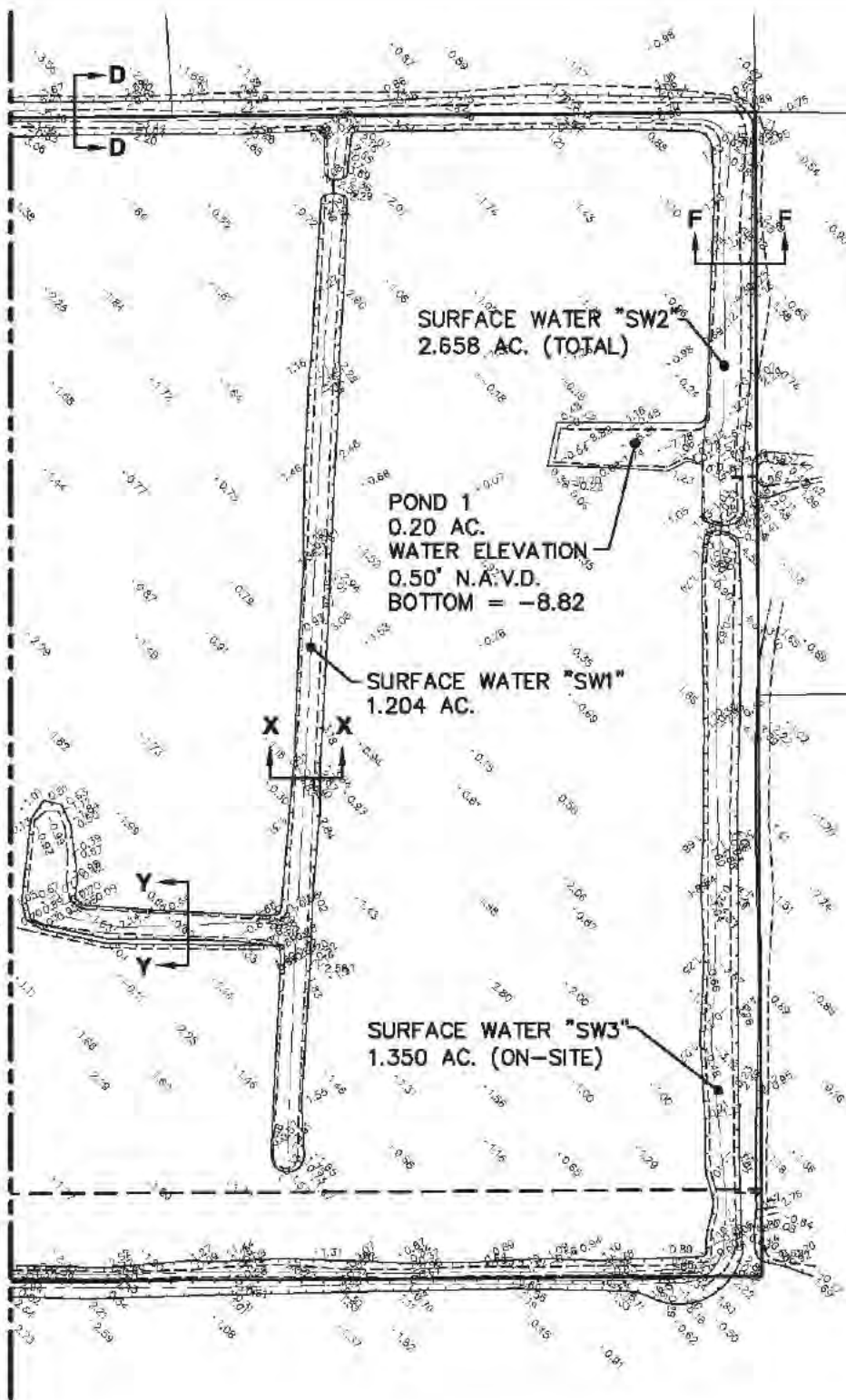
Date : 12/20/16
 Scale : 1"=200'
 P.N. : 393303
 Sheet No.

2

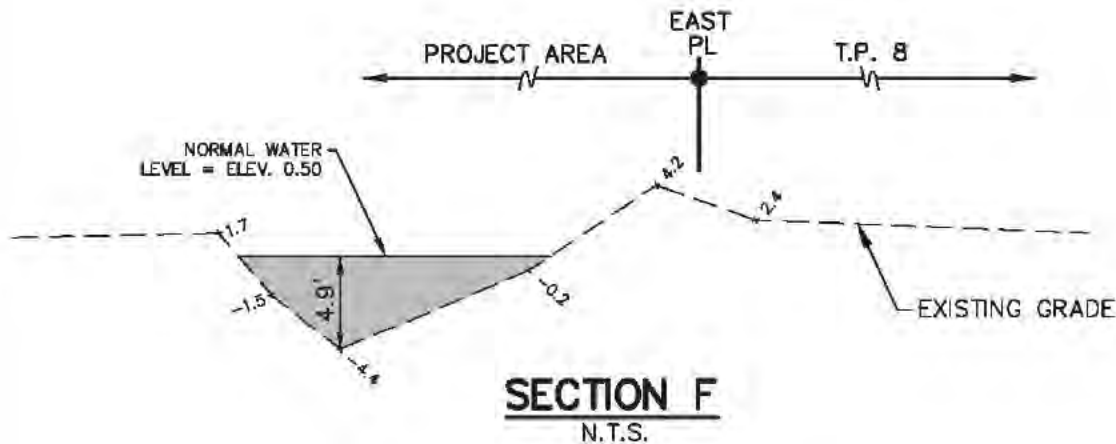
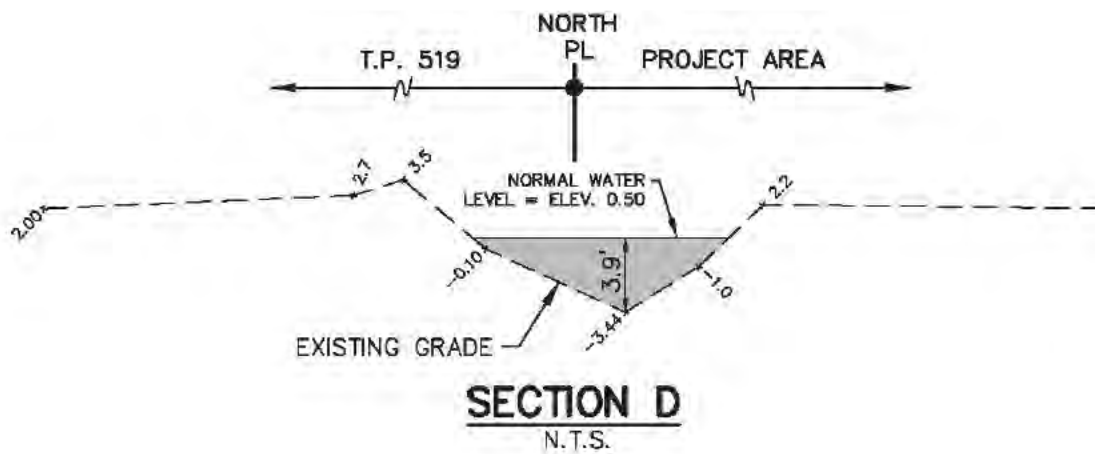
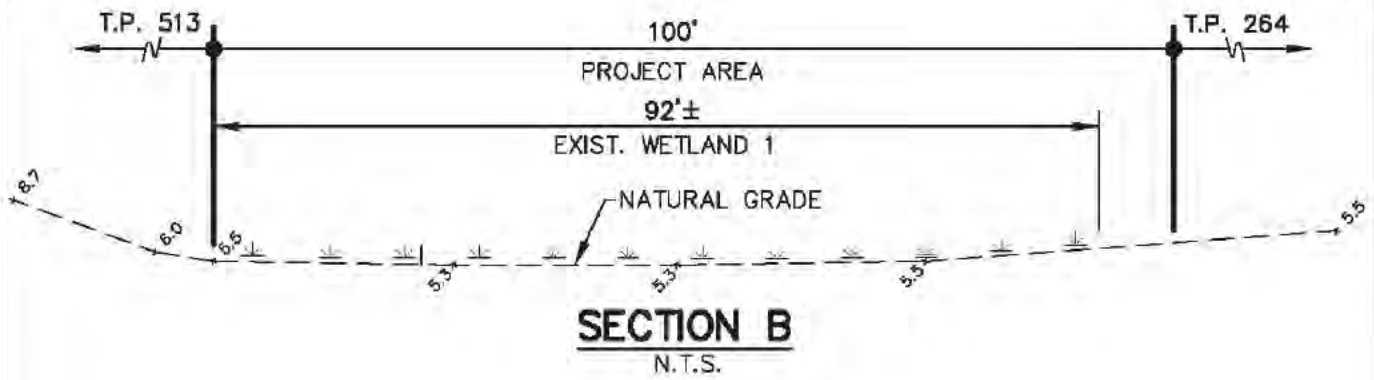


NOTE: See sheet 11 for Surface Water Impact summary and Wetland Impact Summary.

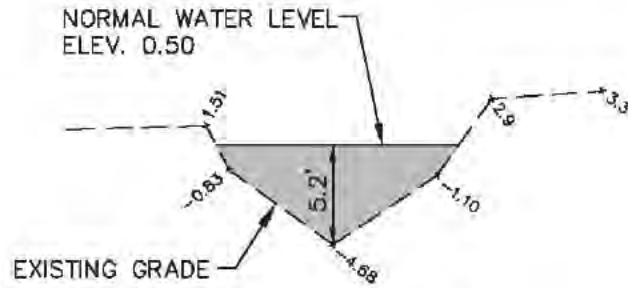
MATCH LINE - SEE SHEET 2



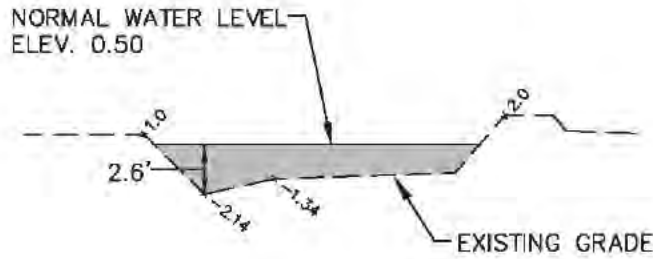
Sec.: 11	EXISTING CONDITIONS SAVANNAH LANDING	Date : 12/20/16	
Twp.: 24 South		Scale : 1"=200'	
Rng.: 36 East	BREVARD COUNTY	FLORIDA	P.N. : 393303
Dsn. by : NA	Bussen-Mayer Engineering Group	100 PARNELL STREET • MERRITT ISLAND, FLORIDA 32953 PH. NO.: (321) 453-0010 FAX NO.: (321) 454-6885	Sheet No.
Drn. by : GM			3
Chk. by : JWM			



Sec.: 11	EXISTING CONDITIONS CROSS SECTIONS SAVANNAH LANDING	Date : 12/20/16
Twp.: 24 South		Scale : N/A
Rng.: 36 East	BREVARD COUNTY	FLORIDA
Dsn. by : NA	 Bussen-Mayer Engineering Group 	Sheet No.
Drn. by : GM		4
Chk. by : JWM		100 PARNELL STREET • MERRITT ISLAND, FLORIDA 32953 PH. NO.: (321) 453-0010 FAX NO.: (321) 454-6885

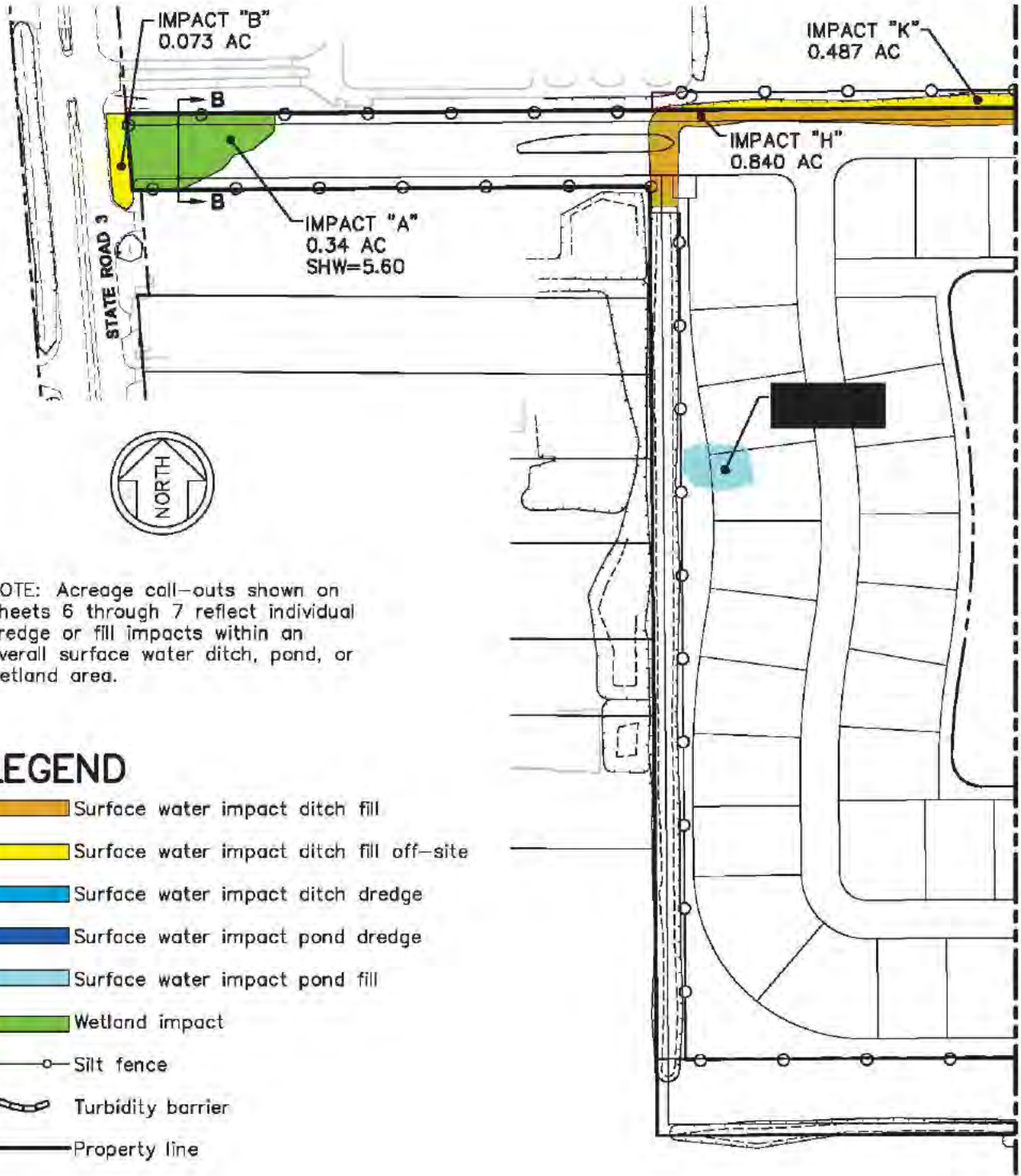


SECTION X
N.T.S.



SECTION Y
N.T.S.

Sec.: 11	EXISTING CONDITIONS CROSS SECTIONS SAVANNAH LANDING	Date : 12/20/16
Twp.: 24 South		Scale : N/A
Rng.: 36 East	BREVARD COUNTY	FLORIDA
Dsn. by : NA	 Bussen - Mayer Engineering Group 	Sheet No.
Drn. by : GM		5
Chk. by : JWM		100 PARNELL STREET • MERRITT ISLAND, FLORIDA 32953
		PH. NO.: (321) 453-0010 FAX NO.: (321) 454-6885



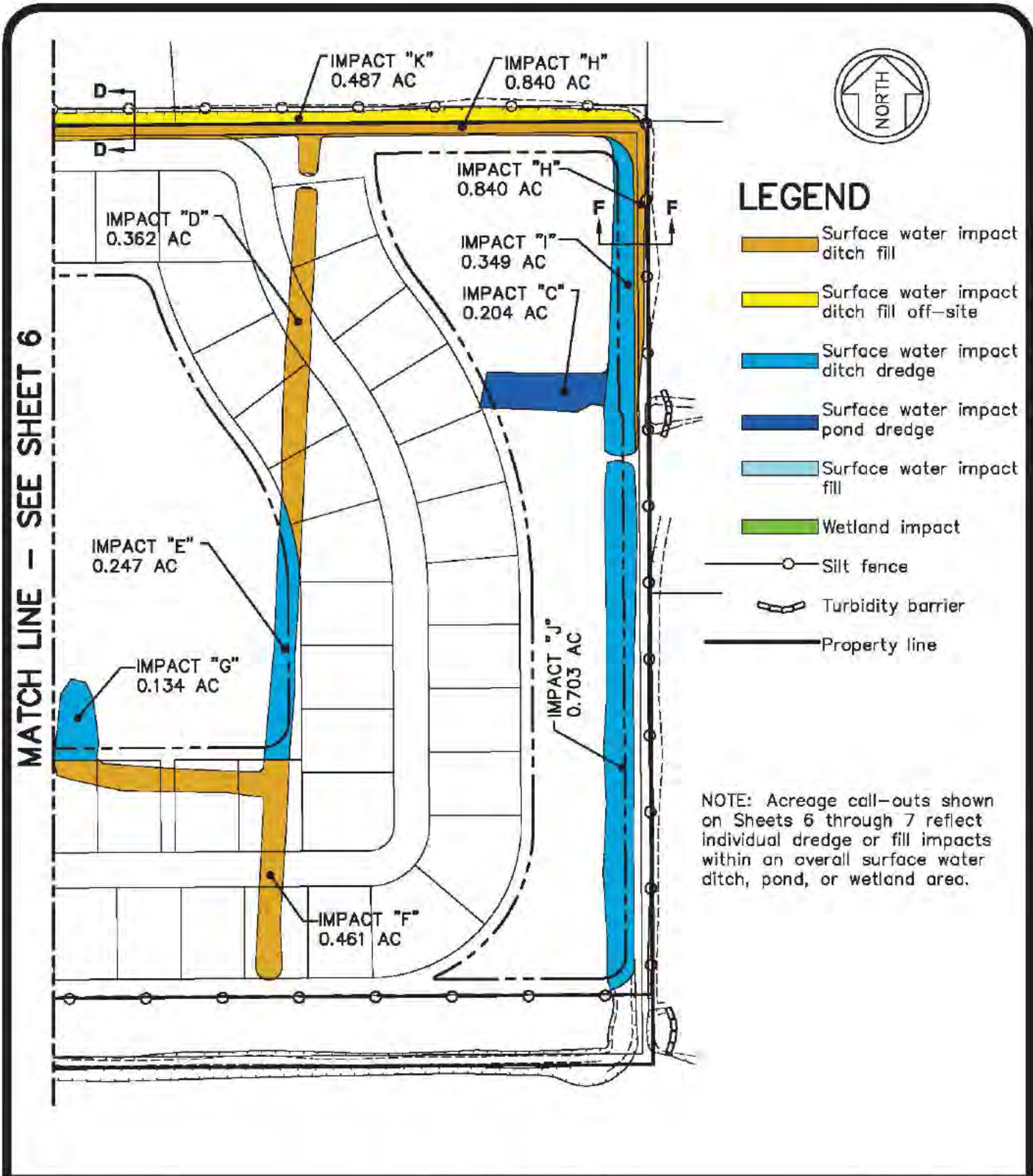
NOTE: Acreage call-outs shown on Sheets 6 through 7 reflect individual dredge or fill impacts within an overall surface water ditch, pond, or wetland area.

LEGEND

- Surface water impact ditch fill
- Surface water impact ditch fill off-site
- Surface water impact ditch dredge
- Surface water impact pond dredge
- Surface water impact pond fill
- Wetland impact
- Silt fence
- Turbidity barrier
- Property line

MATCH LINE -- SEE SHEET 7

Sec.: 11	PROPOSED IMPROVEMENTS SAVANNAH LANDING	Date : 12/20/16
Twp.: 24 South		Scale : 1"=200'
Rng.: 36 East	BREVARD COUNTY	FLORIDA
Dsn. by : NA	Bussen - Mayer Engineering Group	
Drn. by : GM	100 PARNELL STREET • MERRITT ISLAND, FLORIDA 32953	
Chk. by : JWM	PH. NO.: (321) 453-0010 FAX NO.: (321) 454-6885	
	Sheet No.	6



Sec.: 11
 Twp.: 24 South
 Rng.: 36 East
 Dsn. by : NA
 Drn. by : GM
 Chk. by : JWM

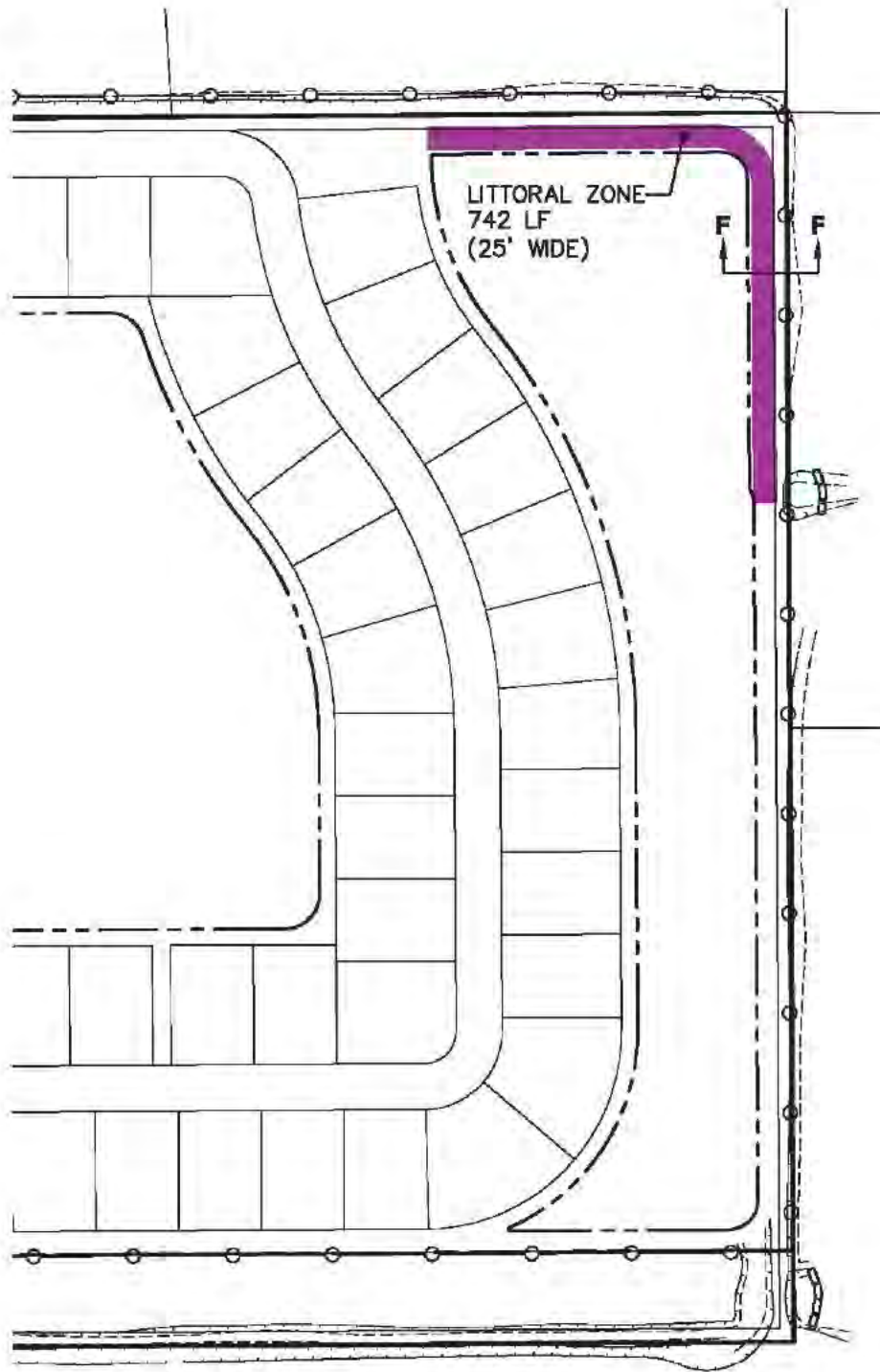
PROPOSED IMPROVEMENTS
SAVANNAH LANDING

BREVARD COUNTY FLORIDA

Bussen-Mayer Engineering Group

100 PARNELL STREET • MERRITT ISLAND, FLORIDA 32953
 PH. NO.: (321) 453-0010 FAX NO.: (321) 454-6885

Date : 12/20/16
 Scale : 1"=200'
 P.N. : 393303
 Sheet No.
 7



LEGEND

- Silt fence
- - - Turbidity barrier
- Property line

Sec.: 11
 Twp.: 24 South
 Rng.: 36 East
 Dsn. by : NA
 Drn. by : GM
 Chk. by : JWM

PROPOSED IMPROVEMENTS SAVANNAH LANDING

BREVARD COUNTY

FLORIDA

Date : 12/20/16
 Scale : 1"=200'
 P.N. : 393303

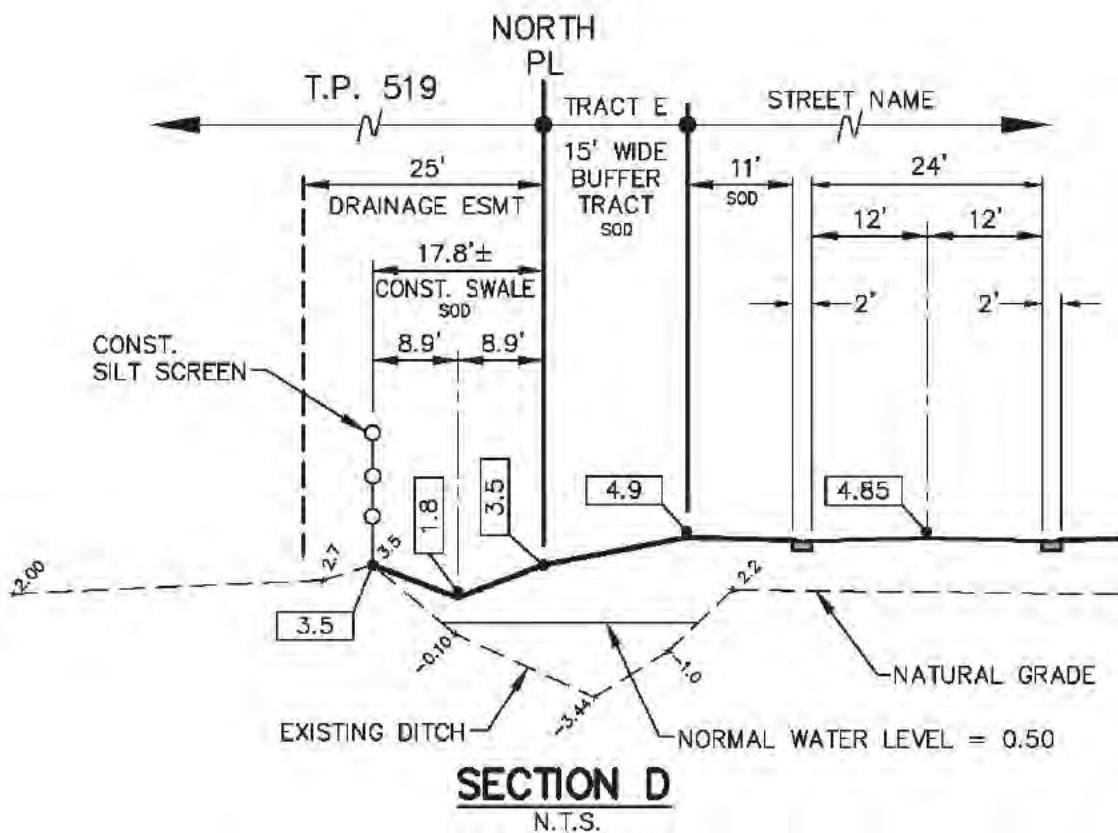
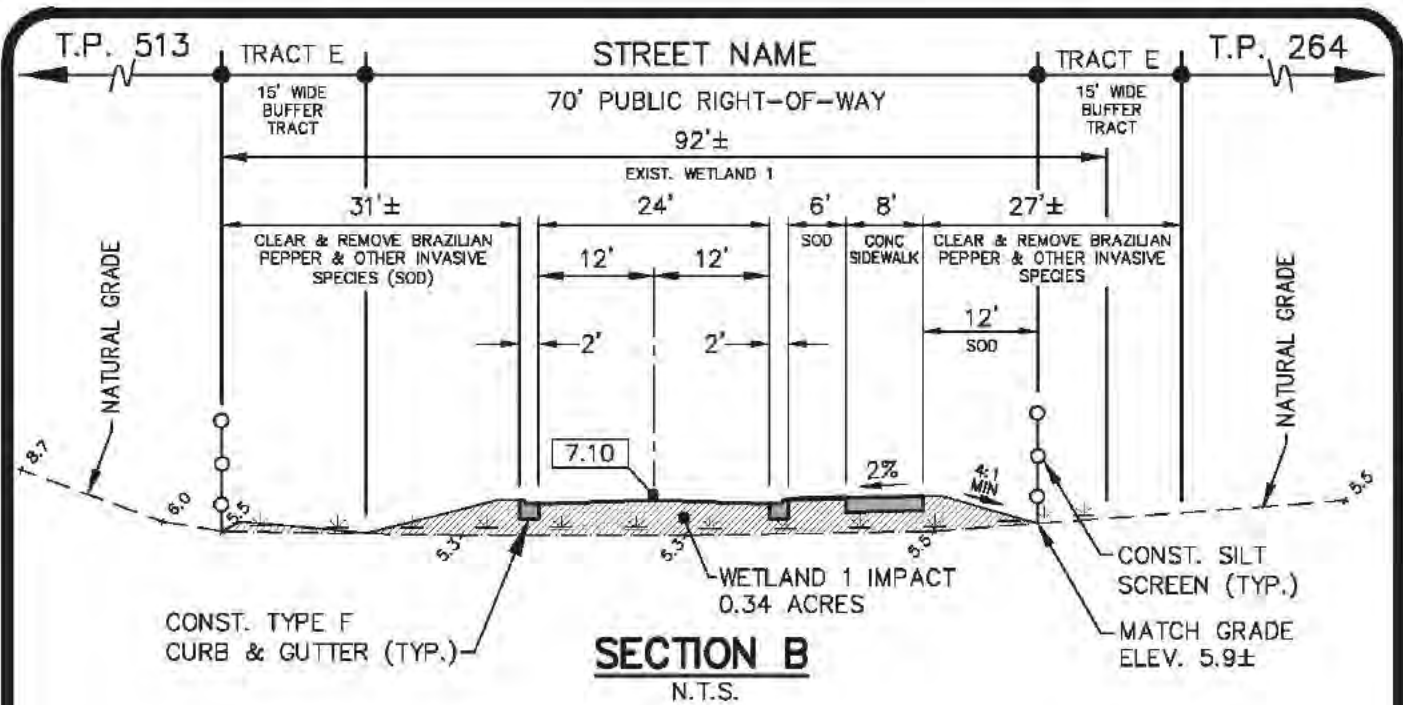


Bussen-Mayer Engineering Group

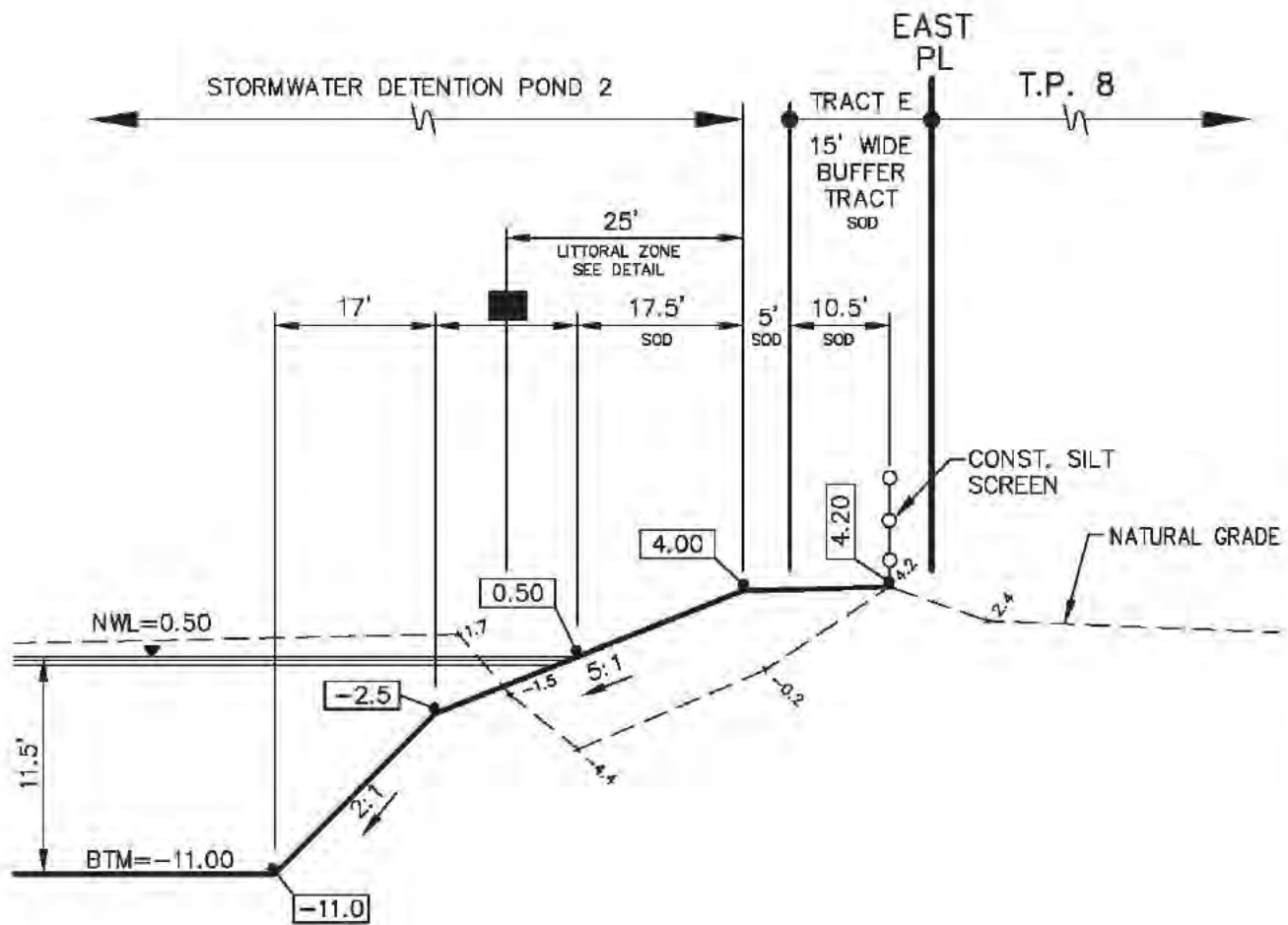
100 PARNELL STREET • MERRITT ISLAND, FLORIDA 32953
 PH. NO.: (321) 453-0010 FAX NO.: (321) 454-6885



Sheet No.
 8



Sec.: 11	PROPOSED IMPROVEMENTS CROSS SECTIONS SAVANNAH LANDING	Date : 12/20/16
Twp.: 24 South		Scale : N/A
Rng.: 36 East	BREVARD COUNTY	FLORIDA
Dsn. by : NA	Bussen-Mayer Engineering Group 100 PARNELL STREET • MERRITT ISLAND, FLORIDA 32953 PH. NO.: (321) 453-0010 FAX NO.: (321) 454-6885	P.N. : 393303
Drn. by : GM		Sheet No.
Chk. by : JWM		9



SECTION F
N.T.S.

Sec.: 11	PROPOSED IMPROVEMENTS CROSS SECTIONS SAVANNAH LANDING	Date : 12/20/16
Twp.: 24 South		Scale : N/A
Rng.: 36 East	BREVARD COUNTY	FLORIDA
Dsn. by : NA	Bussen-Mayer Engineering Group	Sheet No.
Drn. by : GM	100 PARNELL STREET • MERRITT ISLAND, FLORIDA 32953 PH. NO.: (321) 453-0010 FAX NO.: (321) 454-6885	10
Chk. by : JWM		

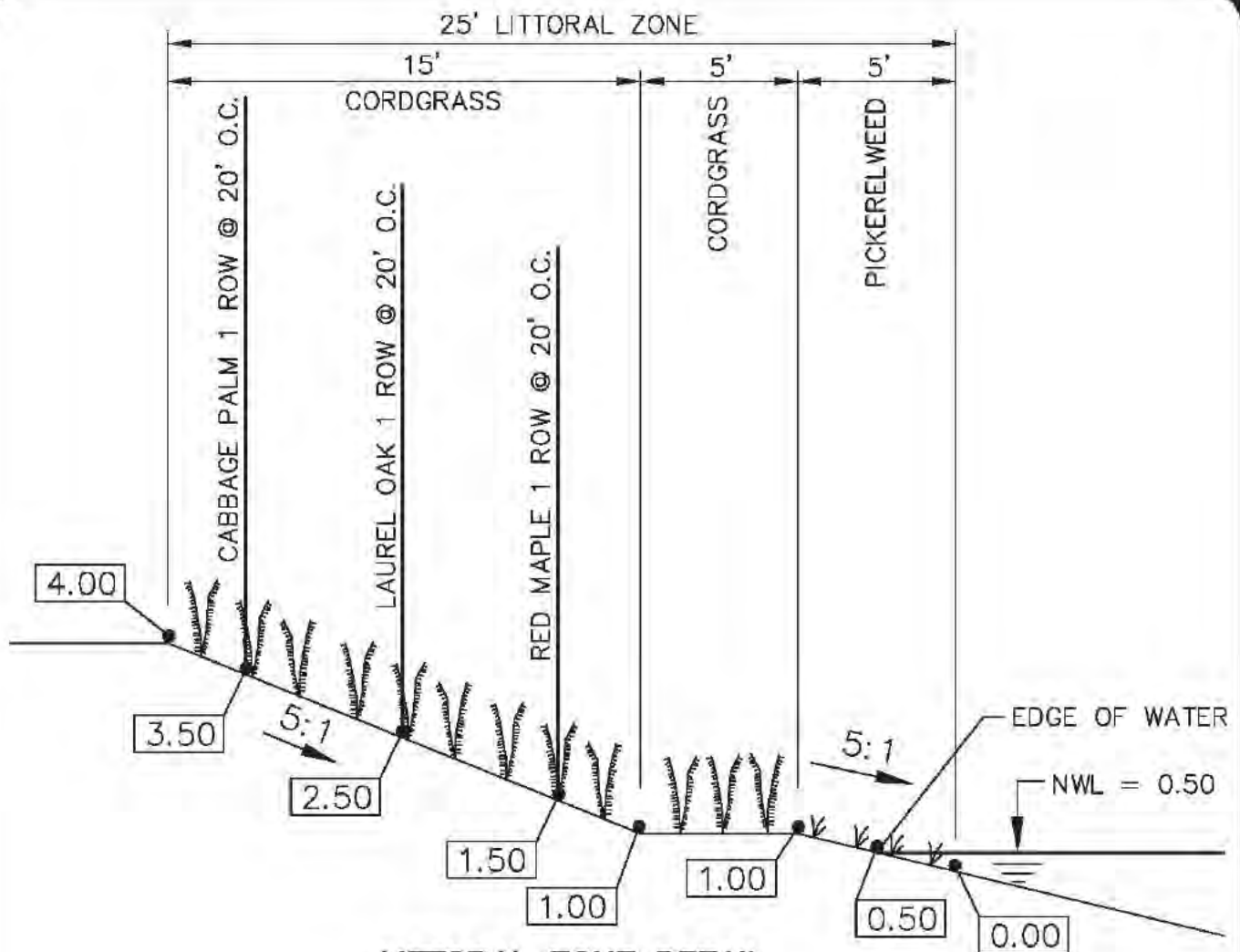
SURFACE WATER IMPACT SUMMARY

Ref. #	Description	Area (AC)		Impact Area (AC)			Fill (CY)	Area to Remain (AC)	Wood Stork Habitat		
		Total	On-Site	Total	Dredge	Fill			* Desig.	Area (AC)	Impact Area (AC)
SW1	Vegetated grove ditch	1.204	1.204	1.204	0.381	0.823		0.000	N		
SW2	Vegetated grove ditch	2.658	2.057	1.676	0.349	1.327		0.982	P	0.04	0.04
SW3	Vegetated grove ditch	1.725	1.350	0.703	0.703			1.022	P	0.02	0.02
SW4	S.R. 3 ditch	0.073	0.000	0.073		0.073		0.000	Y	0.07	0.07
SWP1	Pond	0.204	0.204	0.204	0.204			0.000	N		
SWP2	Pond	0.102	0.102			0.102		0.000	N		
		5.966	4.917	3.860	1.637	2.325	0	2.004		0.13	0.13

* Wood Stork Habitat Designation: Yes (Y), No (N), Portion of (P).
Classified as habitat if NWL = 3 feet or less.

Wetland Summary						
Wetland	Overall Area (Ac.)	Wetland Impacts				Overall Wetland Area Preserved (Ac.)
		Wetland Impact Designation	(Ac.)	Impact Type	Fill or Dredge (CY)	
Wetland 1	0.340	W-1	0.340	FILL	0	0.000
Total	0.340		0.340		0	0.000

Sec.: 11	SUMMARY TABLES SAVANNAH LANDING	Date : 12/20/16
Twp.: 24 South		Scale : N/A
Rng.: 36 East	BREVARD COUNTY	FLORIDA
Dsn. by : NA	Bussen-Mayer Engineering Group	Sheet No.
Drn. by : GM	100 PARNELL STREET • MERRITT ISLAND, FLORIDA 32953 PH NO.: (321) 453-0010 FAX NO.: (321) 454-6885	11
Chk. by : JWM		



**LITTORAL ZONE DETAIL
TYPICAL CLUSTER**
N.T.S.

LITTORAL ZONE PLANTING LIST

BOTANICAL NAME	COMMON NAME	PLANTING SIZE	PLANTING ELEVATION	QUANTITY	SPACING
<i>Pontederia cordata</i>	PICKERELWEED	BARE ROOT	0.00 to 1.00	-	3 FT. O.C.
<i>Spartina bakeri</i>	CORD GRASS	4" PLUG	1.00 to 4.00	-	3 FT. O.C.
<i>Acer rubrum</i>	RED MAPLE	15 GALLON	1.50	-	20 FT. O.C.
<i>Quercus laurifolia</i>	LAUREL OAK	15 GALLON	2.50	-	20 FT. O.C.
<i>Sabal Palmetto</i>	CABBAGE PALM	FULL GROWN	3.5	-	20 FT. O.C.

Sec.: 11
Twp.: 24 South
Rng.: 36 East
Dsn. by : NA
Drn. by : GM
Chk. by : JWM

LITTORAL SHELF DETAILS
SAVANNAH LANDING
BREVARD COUNTY FLORIDA

Date : 12/20/16
Scale : N/A
P.N. : 393303



Bussen-Mayer Engineering Group

100 PARNELL STREET • MERRITT ISLAND, FLORIDA 32953
PH. NO.: (321) 453-0010 FAX NO.: (321) 454-6885



Sheet No.
12